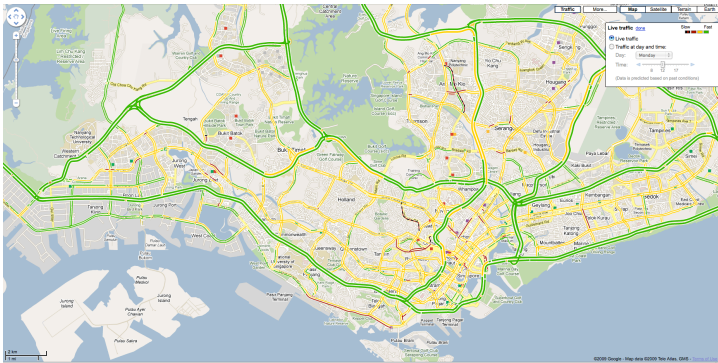


Traffic on Google Maps Singapore



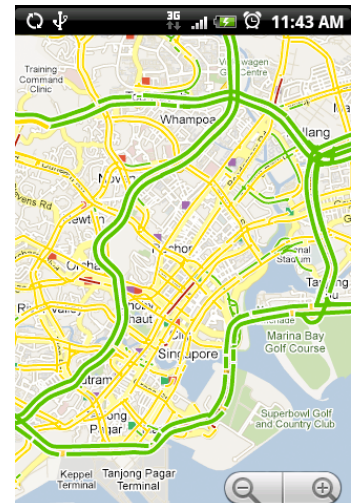
The traffic layer on Google Maps Singapore shows the current traffic status of highways and major roads across the country from a PC or mobile device, helping motorists to avoid busy areas and plan the best route to their destination. To see current traffic information, go to maps.google.com.sg and click the button labeled 'Traffic' at the top of the map.

The traffic information is updated every few minutes with official data from LTA provided by Quantum Inventions. The colours overlaid on

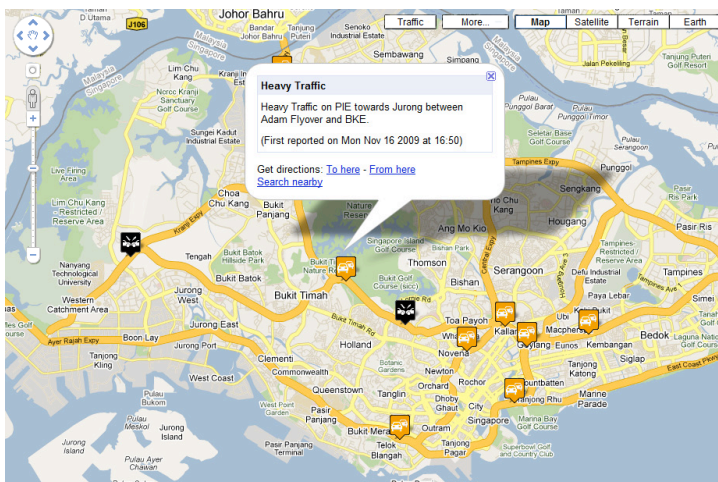
the roads correspond to the traffic speed (relative to the speed limit of the road): green is free flowing, yellow is medium congestion, red is heavy congestion, and red/black is stop-and-go traffic. Users can also click "change" to see expected traffic patterns in the area at any hour on any day of the week based on historical traffic conditions.

Crowdsourced traffic data on Google Maps for Mobile

The Singapore traffic information on Google Maps is augmented by data 'crowdsourced' from motorists who can contribute information on current traffic conditions. If motorists set their mobile devices to have Google Maps for Mobile running, GPS enabled, and the My Location feature turned on, this will send anonymous bits of information back to Google about how fast the mobile device is moving. When combined with anonymised data from thousands of other similarly-enabled mobile devices moving around Singapore at any given time, this helps Google Maps create a more accurate picture of live traffic conditions.



Incidents maplet shows islandwide road conditions



Located on the left navigation panel on Google Maps Singapore, the incidents maplet is based on LTA data and displays accidents, construction, and road closures islandwide. If the traffic looks slow, you can find out what is causing it by turning on the incidents maplet and clicking on the pin to get additional details such as when and where the incident happened.